



2011-2012 Performing Arts Series Order Form

Name: _____

Address: _____

City: _____ State: _____ Zip: _____

Phone _____ E-Mail: _____

Seating Preference: Check all that apply. I wish to sit in the: balcony; orchestra.

On or close to the: center; aisle. Auditorium: left; right. OR best seats available

Please note that we will do our best to seat you as close to your preference as possible.

Please complete one of the following ticket option order forms:

Option #1: Series Subscription Option #2: Flex Pass Option #3: Single Tickets

Option #1: Full Series Subscription Order Form:

| PRIME PRICE | PRIME QTY | VALUE PRICE | VALUE QTY | SUBSCRIPTION TOTAL: |
|-------------|-----------|-------------|-----------|---------------------|
| \$225 | | \$155 | | |

Want to add additional tickets to your Full Series Subscription?

Please use the following form:

| DAY | DATE | TIME | VENUE | PERFORMANCE | PRIME PRICE | PRIME QTY | VALUE PRICE | VALUE QTY | YOUTH PRICE | YOUTH QTY | TOTAL |
|-----|---------------|-----------|-------|-------------------------|-------------|-----------|-------------|-----------|-------------|-----------|-------|
| Sun | Oct. 16, 2011 | 4:00 p.m. | ROH | Chamber Music All Stars | \$25 | | \$15 | | \$8 | | |
| Sun | Nov. 13, 2011 | 2:30 p.m. | ROH | Michael Brown, piano | \$25 | | \$15 | | \$8 | | |
| Sun | Dec. 11 | 2:30 | ROH | Odeon Holiday Concert | Free | | Free | | Free | | |
| Fri | Feb. 10, 2012 | 7:00 p.m. | COH | 100 Years of Broadway | \$25 | | \$15 | | \$8 | | |
| Sun | Feb. 26, 2012 | 2:30 p.m. | ROH | Curtis on Tour | \$25 | | \$15 | | \$8 | | |
| Tue | Mar. 13, 2012 | 7:00 p.m. | COH | Danú | \$25 | | \$15 | | \$8 | | |
| Sat | Apr. 14, 2012 | 7:30 p.m. | Strom | Carmina Burana | \$25 | | \$15 | | \$8 | | |
| Sat | May 5, 2012 | 7:00 p.m. | ROH | Turtle Island Quartet | \$25 | | \$15 | | \$8 | | |
| Sat | June 23, 2012 | 8:00 p.m. | ROH | Music Among Friends | \$50 | | N/A | | \$8 | | |

Subscriber Extra tickets total:

Subscription total + Extra tickets total: _____

Option #2: Flex Pass Order Form

Please select AT LEAST four performances to receive the \$10 Flex Pass discount

| DAY | DATE | TIME | VENUE | PERFORMANCE | PRIME PRICE | PRIME QTY | VALUE PRICE | VALUE QTY | YOUTH PRICE | YOUTH QTY | TOTAL |
|-----|---------------|-----------|-------|-------------------------|-------------|-----------|-------------|-----------|-------------|-----------|-------|
| Sun | Oct. 16, 2011 | 4:00 p.m. | ROH | Chamber Music All Stars | \$30 | | \$20 | | \$8 | | |
| Sun | Nov. 13, 2011 | 2:30 p.m. | ROH | Michael Brown, piano | \$30 | | \$20 | | \$8 | | |
| Sun | Dec. 11 | 2:30 | ROH | Odeon Holiday Concert | Free | | Free | | Free | | |
| Fri | Feb. 10, 2012 | 7:00 p.m. | COH | 100 Years of Broadway | \$30 | | \$20 | | \$8 | | |
| Sun | Feb. 26, 2012 | 2:30 p.m. | ROH | Curtis on Tour | \$30 | | \$20 | | \$8 | | |
| Tue | Mar. 13, 2012 | 7:00 p.m. | COH | Danú | \$30 | | \$20 | | \$8 | | |
| Sat | Apr. 14, 2012 | 7:30 p.m. | Strom | Carmina Burana | \$30 | | \$20 | | \$8 | | |
| Sat | May 5, 2012 | 7:00 p.m. | ROH | Turtle Island Quartet | \$30 | | \$20 | | \$8 | | |
| Sat | June 23, 2012 | 8:00 p.m. | ROH | Music Among Friends | \$50 | | N/A | | \$8 | | |

Subscription Single Extra Tickets total: _____

Option #3: Single Ticket Order Form

| DAY | DATE | TIME | VENUE | PERFORMANCE | PRIME PRICE | PRIME QTY | VALUE PRICE | VALUE QTY | YOUTH PRICE | YOUTH QTY | TOTAL |
|-----|---------------|-----------|-------|-------------------------|-------------|-----------|-------------|-----------|-------------|-----------|-------|
| Sun | Oct. 16, 2011 | 4:00 p.m. | ROH | Chamber Music All Stars | \$40 | | \$30 | | \$8 | | |
| Sun | Nov. 13, 2011 | 2:30 p.m. | ROH | Michael Brown, piano | \$40 | | \$30 | | \$8 | | |
| Sun | Dec. 11 | 2:30 | ROH | Odeon Holiday Concert | Free | | Free | | Free | | |
| Fri | Feb. 10, 2012 | 7:00 p.m. | COH | 100 Years of Broadway | \$40 | | \$30 | | \$8 | | |
| Sun | Feb. 26, 2012 | 2:30 p.m. | ROH | Curtis on Tour | \$40 | | \$30 | | \$8 | | |
| Tue | Mar. 13, 2012 | 7:00 p.m. | COH | Danú | \$40 | | \$30 | | \$8 | | |
| Sat | Apr. 14, 2012 | 7:30 p.m. | Strom | Carmina Burana | \$40 | | \$30 | | \$8 | | |
| Sat | May 5, 2012 | 7:00 p.m. | ROH | Turtle Island Quartet | \$40 | | \$30 | | \$8 | | |
| Sat | June 23, 2012 | 8:00 p.m. | ROH | Music Among Friends | \$50 | | N/A | | \$8 | | |

Order Fee (only applies to single ticket buyers): \$5

Single Ticket total: _____

Continue to next page to determine your Grand Total →

Total of Ticket Options = \$ _____

Contribution • Bay Chamber Concerts is a 501 (c) (3) registered non-profit organization. Ticket sales cover half of our expenses. Please consider adding a tax-deductible contribution to your order to help bring music to our community. = \$ _____

GRAND TOTAL = \$ _____

Payment Method

Check Enclosed (Payable to Bay Chamber Concerts) OR Credit or Debit Card (Visa or MasterCard)

Credit Card Number: _____

Expiration Date: _____ CID (3 digits on back): _____

Please send completed order form to:

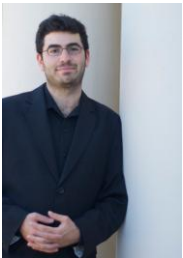
Attention Box Office • PO Box 599 • Rockport, ME 04856 • Ph: (207) 236-2823 • Fax: (207) 230-0454

***** **2011-2012 Performing Arts Series Calendar of Events** *****



October 16: Chamber Music All Stars, Rockport Opera House

Join us for our traditional fall season opener - a chamber music concert that brings together members of the Muir String Quartet and other notables. Featuring Peter Zazofsky, violin; Maria Lambros, viola; Michael Reynolds, cello; Marc Johnson, cello; and Michelle Levin, piano, the program includes favorite works by Bach (a gamba sonata), Beethoven (the piano quartet) and Brahms the B Major trio.



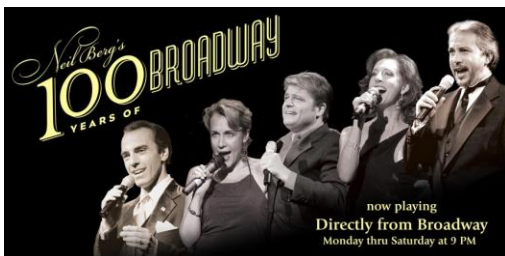
November 13, 2011: Michael Brown piano, Rockport Opera House

You don't want to miss Michael Brown, an outstanding young pianist who has been described by the New York Times as "a vividly characterized player." His program will include Mendelssohn's sonata in E Major, Op. 6; Chopin's Rondo a la Mazur, Debussy's Etudes, Book 2 and his L'isle joyeuse. The program is proudly co-presented in conjunction with Midori's *Partners in Performance*.



December 11, 2011: Odeon Holiday Concert with Marc Johnson, Rockport Opera House

Bay Chamber's Odeon Holiday Concert, with conductor Deidre McClure and artistic directors Gilda Joffe and Mike Reynolds will take place December 11, 2011 at 2:30 p.m. at the Rockport Opera House. This annual concert features all four Odeon ensembles: Junior, Symphony, Chamber and Adult. A concerto for cello and string orchestra by Astor Piazzolla featuring renowned musician Marc Johnson and works by Foote, Ives, and others fills out the program.



February 10, 2012: 100 Years of Broadway, Camden Opera House

Save yourself a trip to New York. You can see five Broadway stars and fifty of the greatest characters from Broadway musicals, all in one unforgettable evening! Direct from New York, you will hear songs from the greatest Broadway musicals such as *Phantom of the Opera*, *Les Miserables*, *Jersey Boys*, *Chicago*, *Mamma Mia* and *Jekyll & Hyde* presented by singers who sang many of these roles on Broadway, supported by an all-star New York band.



February 26, 2012: Curtis on Tour, Rockport Opera House

The spring 2012 Curtis on Tour program is a celebration of classical guitar at the Curtis Institute. The concert will feature Curtis Director, Roberto Diaz, Jason Vieaux (a new guitar faculty member), and two of the Institute's outstanding string players in a program of music for guitar and strings. The program includes Paganini's last guitar quartet and Piazzolla's *Oblivion* for guitar and strings.



March 13, 2012: Danú, Camden Opera House

Prepare for Saint Patrick's Day by celebrating the acclaimed Irish ensemble Danú. The group has thrilled Celtic music lovers around the globe with virtuoso playing on fiddle, flutes, button accordion, percussion and the gorgeous voice of Muireann Nic Amhlaibh.



April 14, 2012: Carmina Burana, Strom Auditorium

Carl Orff's monumental 1937 *Carmina Burana* became famous overnight for its melding of Greek tragedy, Italian musical theater and infectious rhythms to produce a stage spectacle of spring merry-making. Down East Singers joins forces with noted soloists (including counter-tenor, John McVeigh), a children's choir, and instrumentalists (including Bay Chamber artistic director, Thomas Wolf) in a first-ever performance of this masterpiece.



May 5, 2012: Turtle Island Quartet – The Music of Jimi Hendrix, Rockport Opera House

Back by popular demand! The Turtle Island Quartet has earned rave reviews for their jazzy take on traditional chamber music and their classical take on traditional jazz. On May 5, 2012 at the Rockport Opera House, they will perform their salute to the great Jimi Hendrix.



June 23, 2012: Music Among Friends, Rockport Opera House

This special concert will mark Thomas Wolf's retirement after a half century as Artistic Director of Bay Chamber Concerts and it is a must hear. The gala program, in which Wolf himself will perform, will feature works by Handel, Arensky, and Schumann, and will include Curtis Institute of Music Director Roberto Diaz, former Boston Symphony concertmaster, Joseph Silverstein, Muir Quartet cellist Michael Reynolds, Vermeer Quartet members Shmuel Ashkenasi and Marc Johnson, and pianist Gloria Chien. It will be followed by a champagne reception.